

Spaces and Places Plan for Sport and Recreation in Greater Christchurch

Draft

Sport and Recreation Earthquake Leadership Group

MARCH 2012

1. Table of Contents

1.	Table of Contents	1
2.	Executive Summary.....	2
3.	Introduction	5
4.	Scope.....	6
4.1.	Future Approach to Provision of Places and Spaces for Sport and Recreation	6
4.2.	Key Planning Principles	7
4.3.	Co-location	7
4.4.	Hubbing.....	8
4.5.	Partnerships	8
5.	Regionally significant needs and proposed solutions.....	9
5.1.	Open Spaces for walking and cycling	9
5.2.	Aquatic Facilities	9
5.3.	Creation of Major Sporting and Recreational Hubs and Indoor Facilities	10
5.4.	High Performance Sport – Regional Centre of Excellence	10
5.5.	Venue for Flat Water Sports	11
5.6.	Motorsport Events Hub	11
5.7.	Sport and Recreation Major Events	11
6.	Possible Development Sites for Sport and Recreation	12
6.1.	Map 1 – Proposed Precincts and Major Hubs for Sport and Recreation in Greater Christchurch	13
6.2.	Map 2 - Proposed Precincts and Major Hubs for Sport and Recreation in Christchurch City	14
7.	Timing Schedule for Major Projects.....	14
8.	Looking Forwards.....	18
9.	Schedule One	19
9.1.	Identification of future trail network development for Canterbury.....	19
10.	Schedule Two	20
10.1.	Major Identified Sites.....	20

2. Executive Summary

Canterbury's sport and recreation landscape has changed significantly as a result of the 2010 and 2011 earthquakes. This plan is intended to empower and support planning [by CERA, Councils and regional sport organisations] to recover and enhance the sport and recreation infrastructure in greater Christchurch. This plan has been developed collaboratively by Sport NZ, Sport Canterbury, Christchurch City Council, Waimakariri District Council, and Selwyn District Council in consultation with Iwi and national, regional and local sporting organisations and other sectors.

Sport and recreation are critical to the communities within Greater Christchurch in a number of ways including:

- Defining Canterbury's identity
- Contributing to social cohesion, social capital, health and community development outcomes
- Returning an economic value of approximately \$760 million to the Canterbury economy (based on 2008/09 figures)
- Employing over 7,000 people (about 2.5% of the workforce) in the region
- Rallying the support of 124,000 volunteers annually

The earthquake recovery presents a huge opportunity to re-shape the delivery of sport and recreation and to fit with the new shape of urban settlement in Greater Christchurch. A network of well-located hubs is proposed to underpin leading edge provision of places and spaces, growth in participation and the pursuit of excellence. These hubs build in greater flexibility and agility to accommodate changes in participation patterns over the life of the facilities.

The Places and Spaces Plan is proposing a preferred general direction or pathway for development based on best practice and evidence of need. Table one lists the suggested priority of projects by purpose and timing of development.

Table 1: Priority Development Projects

Projects are sorted by type/function and then by timing.

Immediate	1-3 Years	4-10 Years	10+ Years	Project
				Temporary rectangular stadium for rugby, rugby league and football
				Permanent rectangular stadium if AMI is not restored
				Repair to Kaiapoi Aquatic Centre
				Selwyn Aquatic Centre at Rolleston
				Review CCC's Aquatic Facilities Plan 2006
				Utilise School pools for community use
				Regional aquatic sports centre to recover lost capacity
				Aquatic facility in Lincoln area
				New 8-10 court multi-use stadium for indoor sport and recreation
				Decide the future of Cowles Stadium and proceed
				Wigram Hangars conversion initially to indoor courts for basketball and netball
				Additional indoor courts in Waimakariri as part of a new facility in Rangiora
				Additional indoor courts in Selwyn as part of a new facility in Rolleston
				Portable grandstand seating for use by wide range of sports venues
				Stage 1 - all weather athletics track replacing track closed indefinitely at QEII
				Stage 2 - create a Class 2 athletics venue to host athletics events
				Extend the existing Badminton stadium at Cuthberts Green
				Badminton facility in west of Christchurch as part of a sporting hub
				Canterbury Trails network staged development
				Restore access to Sumner Road, Evans Pass and the Summit Road for recreation cycling, walking and running
				International cricket arena at Hagley Park
				Wilding Park Tennis Centre (regional hub)
				Satellite Tennis Centres (local hub)
				Cycling Velodrome
				Develop a BMX competition track (regional hub)
				Flat water course for training and shore facilities
				Flat water course for competition events
				Replace/Repair Christchurch School of Gymnastics Gymsports Centre
				Gymsports Develop a third centre
				Gymsports Develop the existing Olympia centre
				3rd Nunweek Park hockey turf
				Hockey arena with 2 water turfs
				Permanent pavilion and seating at Hockey arena
				HP Regional Centre of Excellence – short term/temporary solution
				HP Regional Centre of Excellence – long term solution
				Implement a programme of artificial / sand based rectangular pitch

Immediate	1-3 Years	4-10 Years	10+ Years	Project
				development
				Sports house administration hub

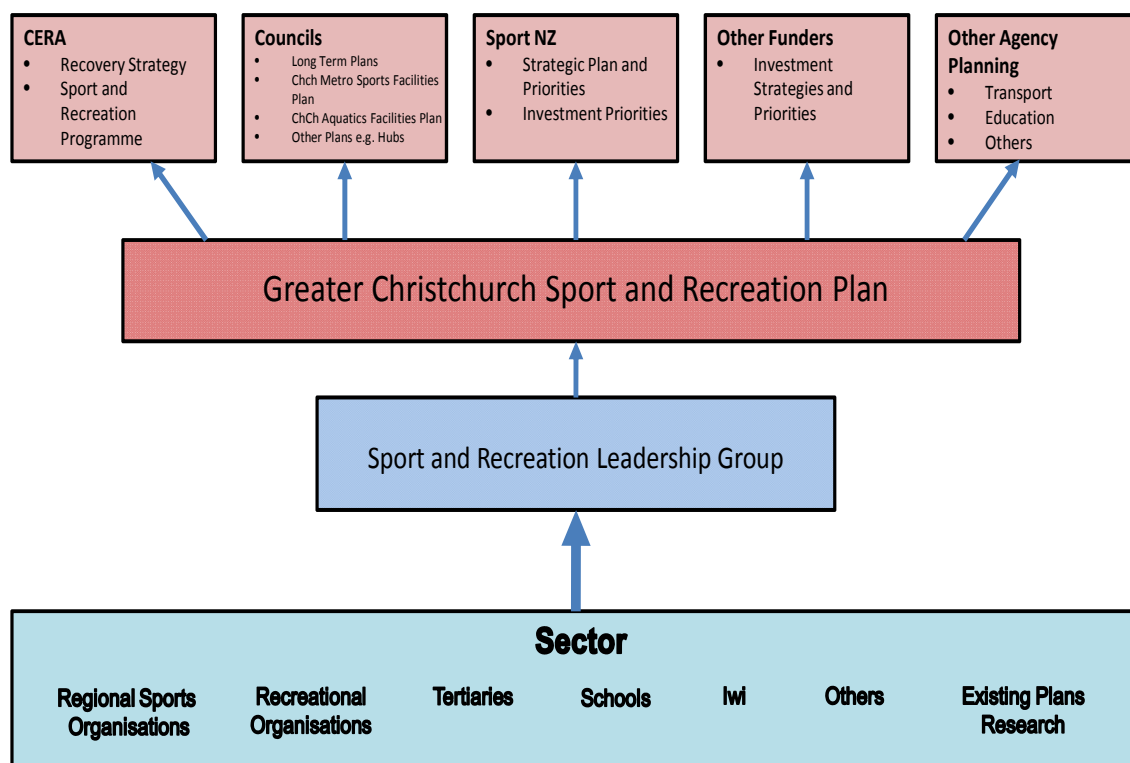
3. Introduction

The Sport and Recreation Earthquake Leadership Group (SRLG) was formed by Sport New Zealand, Christchurch City Council and Sport Canterbury to coordinate recovery for the sport and recreation sector. Initially the Sport and Recreation Earthquake Leadership Group was focussed on immediate emergency needs for sport and recreation and has then moved to manage both the short term and long term approach for sport and recreation. A wider Project Group was formed with Environment Canterbury, Waimakariri District and Selwyn District Councils also contributing to the development of the Places and Spaces Plan.

Research including three rounds of consultation with regional sports bodies, Ngai Tahu, tertiary institutions, Government agencies and other stakeholders was undertaken from August 2011. An issues and options paper was developed in the last quarter of 2011 to help crystallise thinking to date regarding the long term recovery and development of places and spaces. The document identified needs and some possible options for meeting these needs.

The Issues and Options paper should be used as an appendix to the plan (see attached report).

This plan is a long-term framework to guide and inform Councils, other funders, sport and recreation stakeholders and other stakeholders', it is not a decision making plan. Organisations will make their own decisions on the specific actions listed in the places and spaces plan, not automatically as a result of this plan. The diagram below illustrates how the plan should be used to inform the future of the greater Christchurch area.



The opportunity to use sport and recreation to deliver the very best for Greater Christchurch and its people is compelling. Sport and recreation will play a substantial and vital role in reshaping Greater Christchurch into an integrated, sustainable and vibrant region. The vision is that dynamic and innovative sport and recreation provision is at the heart of the well-being, pride and vibrancy of Greater Christchurch. It is widely recognised that sport and recreation contributes significantly to community well-being. The challenges facing Greater Christchurch in recovering from the earthquake events will impact on the sport and recreation, these include:

- The assessment of places and spaces and settlement process with insurers may extend through to 2013 or beyond
- Likely scarcity in resources to re-develop
- The gap between the expectations of stakeholders and what can be delivered in terms of replacement in the short term (0-3 years) and the medium term (4-10 years) and enhancement of places and spaces in the longer term (10+ years)
- Further seismic events that delay re-construction activity
- Uncertainty of future demographics and residential settlement, particularly in the east of Christchurch city

4. Scope

The plan is wholly focussed on significant places and spaces and the physical infrastructure resources in Greater Christchurch. A significant place or space serves a catchment of at least regional or district level (or equivalent size catchment of about 60,000 within Christchurch City).

The key indicators as to which sport and recreation activities are included in the places and spaces plan is that they:

- Have a significant presence in Greater Christchurch reflected by the number of residents participating in the sport or recreation activity and importance to Cantabrians reflected by the number of spectators who participate in or attend their events.¹
- Require specific places and spaces to conduct their activity

Please see the *Issues and Options Paper* for further information on participation.

Temporary solutions to provide a short life fix (3-5 year life) are considered as transitional measures within this plan.

4.1. Future Approach to Provision of Places and Spaces for Sport and Recreation

The draft Recovery Strategy for greater Christchurch (CERA, September 2011) identified the following challenge in relation to sport and recreation in its summary document:

Ensuring greater Christchurch is a vibrant and attractive place for residents, businesses and visitors, with a range of social, cultural, recreation and sporting activities.

The draft Recovery Strategy also identified the following objective and outcomes within the section *Social (including Sports, Recreation, Arts, Culture and Heritage) Recovery Plans, programmes and activities* (p.55):

Objective: To re-establish broad participation in sports, recreation, arts and culture across greater Christchurch.

Outcomes:

Participation in sport, arts, recreation and culture at all levels is at least returned to pre-earthquake levels and occurs across all of greater Christchurch.

¹ Participation is members registered with their local club or RSO and adult participation through Active New Zealand survey plus school representation and competitions through School Sport)

Reinvestment reoccurs in the facilities [places and spaces] identified by the sports and recreation and arts and culture sectors as vital suburban and central city infrastructure.

Sustainable major sport and cultural events attract residents and visitors.

Employment across the sector returns to, or exceeds, pre-earthquake levels.

4.2. Key Planning Principles

Dynamic and innovative sport and recreation provision is at the heart of the well-being, pride and vibrancy of Greater Christchurch. The intent of this Plan is for Greater Christchurch to once again have world-class places and spaces that are accessible, encourage participation and attract major events for sport and recreation activities important to residents.

The long-term outcomes from stakeholder implementation of the Places and Spaces Plan largely reflect outcomes in previous planning undertaken by the stakeholders and include:

1. Participation at all levels in sport and recreation is at least returned to pre-earthquake levels and occurs across all of greater Christchurch.
2. The redeveloped network of places and spaces across Greater Christchurch meets the needs of residents to participate, perform and excel in sport and recreation activities
3. Suitable places and spaces are provided to enable promising and talented participants to be nurtured and given the opportunity to maximise their potential in sport and recreation activities
4. Suitable places and spaces are provided to host major sport and recreation events that attract residents and visitors.

Principles have been developed to ensure places and spaces projects will be integrated with the wider community, will be accessible, innovative, sustainable, aligned with wider planning, usually will involve partnering and sharing and will contribute vitality to community life.

The loss of infrastructure as a result of the earthquakes has presented an opportunity to not only replace lost capacity but also reshape the provision of places and spaces for sport and recreation in Greater Christchurch. The proposed approach will take advantage of innovations and best practice within the sector to both replace lost capacity and improve the network of places and spaces used for sport and recreation.

The Places and Spaces Plan is proposing a preferred general direction or pathway for development based on best practice and evidence of need. Some key strategies within this general direction are briefly described below.

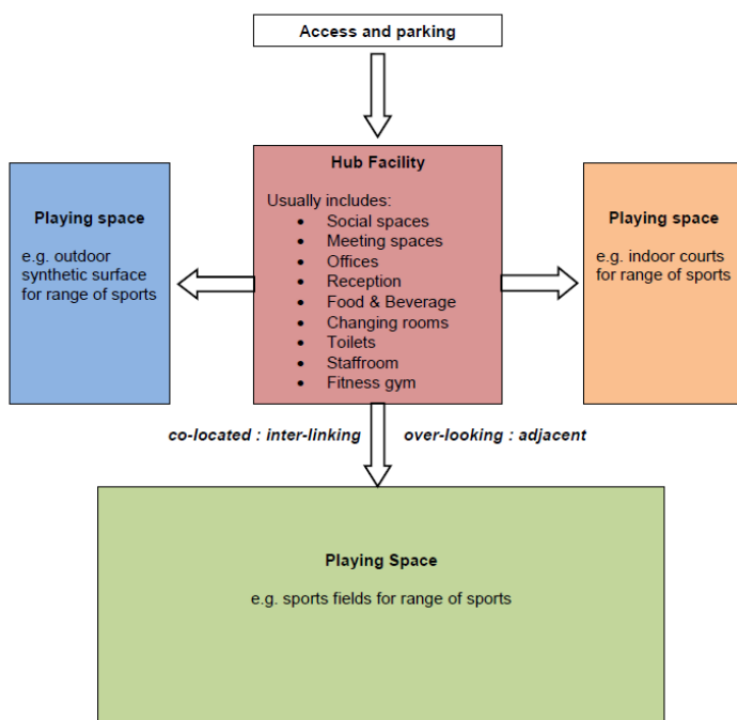
4.3. Co-location

Co-location is a key strategy for provision of sporting and recreation facilities particularly where there is common need for a service or function (such as reception) and where there is the potential for sharing of facilities (fitness and high performance centres, change and other amenities, meeting and social spaces), parking and human resources. Co-location can achieve more social benefits, more economically from consolidation of services and facilities, such as co-located swimming pools, indoor sports centres and health & fitness centres.

Co-location in cross-sector developments with libraries, arts and cultural centres, service centres, community centres, schools, tertiary education institutions and commercial service providers should be explored.

4.4. Hubbing

A key innovation is the development of a network of significant local **hubs** throughout Greater Christchurch. The network of local hubs is intended to complement the planned Metropolitan Sports Facility in central Christchurch.² Each local hub



would have a significant land area and usually a single integrated facility to enable a range of sport and recreation activities to be undertaken at the site. Some local hubs could also contain the main **regional hub** for a particular sport including their specialist high performance training facility. Greater Christchurch already has an extensive network of parks³ to enable the further development of the hub approach to provision.

A **precinct** is larger than a hub and a major regional destination such as Hagley Park and QEII (pre-earthquake). A precinct is a cluster of similar purpose facilities in close proximity

usually on the same site but operating independently of each other. There is potential for development of one or more sport and recreation precincts to replace QEII and possibly other sites in the east of Christchurch. The precinct could have one or more hubs, possibly one or more sports club partnerships as well as other partners such as sport and recreation facilities of a school or tertiary education institution within its area. An event precinct is an option, such as at Addington, with benefit from shared parking. The feasibility for co-location should be considered as part of planning for any major works on independent facilities at these precincts.

4.5. Partnerships

Partnering is a key strategy for making more effective and efficient use of land and facilities. The earthquake recovery presents opportunities to both enhance and rationalise provision for community sport and recreation provision through partnerships. Successful partnering underpins relationships and is essential to achieving viable co-location, hubbing and precincts. Opportunities include:

- **Sports club partnerships** as a more sustainable approach to provision of sport and recreation. Sports club partnerships fit well with the hub approach to provision of physical infrastructure.
- **Schools** are an important network of places and spaces embedded in local communities.⁴ A process needs to be set up to work with schools in Canterbury to encourage community use of grounds and

² The proposed development of a Metropolitan Sports Facility over the next 6 years is a key action within the Central City Plan. This will be a major regional hub for a number of sports using it for community participation through to high performance training and hosting of events.

³ A hub park in this context is greater than 10 hectares in land area.

⁴ Preliminary data from a Ministry of Education survey of state schools in Christchurch City, Selwyn District and Waimakariri District completed in December 2011 shows an extensive network (and investment) in provision for sport and recreation including:

- 99 out of 167 state schools have an indoor space for sport or recreation, some of these spaces have full-size courts marked out for basketball (17 some with limited safety run-off), volleyball (52), badminton (95), Futsal (4) and netball (6 but only 2 spaces are large enough for a full-size netball court with 3m run-offs)
- 207 full-size fields (111 rugby and 106 football including 26 fields shared plus 16 grass turf hockey fields), several schools have part-size playing fields
- 60 cricket fields (23 wicket squares and 50 artificial wickets)
- 314 outdoor courts marked for netball, 111 marked for tennis with many double marked for both sports including 32 courts with lights

facilities including shared land use. The risks and issues of shared provision and use should be worked through to demonstrate the benefits.

- Partnerships with **tertiary education**⁵, particularly CPIT, Lincoln University and University of Canterbury, is vital to sport and recreation development in Greater Christchurch, Canterbury and the South Island through provision for student, staff and wider community participation in sport and recreation and high performance through sports science and technology
- Partnership **Te Runanga O Ngai Tahu** including enhancing waterways for sport, recreation and kaimoana gathering and development of sport and recreation facilities such as Wigram Hangars.
- A variety of **other partners**, involving both public and private parties, and several opportunities have been identified to date including the YMCA, Addington Raceway, Canterbury Jockey Club and commercial sport and recreation providers

5. Regionally significant needs and proposed solutions

A large number of needs and solutions have been identified through consultation with stakeholders, many of these are on a smaller scale and are detailed in the Issues and Options paper. The significant regional or district wide (or equivalent) needs and recommended solutions are described below.

5.1. Open Spaces for walking and cycling

The development programme for walking and cycling is extensive and will be staged to fit with available resources. Identified trail developments that form a connected and integrated network for these popular activities are shown in the map below (map still to come). See the full list of development opportunities in schedule one for descriptions.

Walking and cycling cannot be considered as just a sport and recreation activity set. All infrastructure development for cycling and walking can help to increase the number of people that participate in walking and cycling on a day to day basis. Embedding minimum standards for cycling and walking infrastructure in the rebuild of Christchurch will allow for an active, vibrant city, consistent with the vision of this plan.

5.2. Aquatic Facilities

Proposed development projects for rebalancing the network to improve access to public aquatic facilities include:

1. Complete the Selwyn Aquatic Centre at Rolleston with 25m 8 lane pool learn to swim pool, toddlers pool, therapeutic pool with spa.
2. Repair the Kaiapoi Aquatic Centre
3. Update the Christchurch City Council Aquatic Facilities Plan 2006 to complement the changing needs and demographics of the city and the lost capacity.
4. Develop a major indoor aquatic centre to replace the lost capacity due to the indefinite closure of QEII. Namely the large scale competitive, water-sport and leisure aquatic complex .
5. Upgrade strategically located school pools to provide improved local learn to swim and recreational swimming opportunities in partnership with the Ministry of Education
6. Develop indoor aquatic centres in Christchurch city as necessary to fill gaps in network caused by earthquakes and to cater to the reasonable needs of the community over time.

⁵ Prior to the earthquakes all three major tertiary organisations in Canterbury were planning major redevelopment of sport and recreation facilities. All three institutions are keen to partner with their respective Council and other stakeholders in these major hub developments.

The best location to replace the large scale competitive, water-sport and leisure aquatic facilities previously located at QEII will be determined through the next phase of more detailed planning by Christchurch City Council. Two leading location options consistent with the planning principles and current provision are:

- In the vicinity of Canterbury University and Jellie Park. This is primarily due to the fact that this area is in the centre of population, surrounded by schools and tertiary institutions. The area is in close proximity to the central city, airport and has easy access to the growth areas of the north and west. There are also several existing sports facilities to complement any new development. However, Jellie Park / University area is already well served with community pools from Graham Condon in the north to Pioneer in the south.
- In the central city playing a significant role in revitalising the central city and forming a world class sporting hub when joined with existing sports hub on Hagley Park and the Avon river recreational corridor.

5.3. Creation of Major Sporting and Recreational Hubs and Indoor Facilities

A regional sporting hub similar in size and scope to that proposed in the central City Plan is critical to hosting events as well as delivering participation capacity. This plan sees an opportunity to combine the aquatic and indoor sports facilities proposed in the Central City Plan with the existing sporting hub on Hagley Park to provide Christchurch with a centre for sport unsurpassed in New Zealand. This hub will be supplemented by several smaller scale court facilities in local hubs in the Greater Christchurch in the future. All local hubs should contain indoor court space as a core component. Some of these hubs could be developed through partnership arrangements such as with Ngai Tahu (Wigram Hangars), tertiary education institutions and schools.

Proposed development projects for the provision of indoor courts include:

1. Develop a regional hub facility for basketball and netball and other indoor sports with 8-10 indoor courts
2. Determine the future of Cowles Stadium and/or provision of indoor courts in the east of the city, this may depend on the location of the 8-10 court facility.
3. Develop indoor courts in the Wigram Hangars. This can be expedited to provide capacity immediately while future of Cowles Stadium is being determined and new facilities are constructed.
4. Increase capacity in the west preferably through a partnership with the University of Canterbury with assured long-term access for community sport to any jointly planned indoor court facility.
5. Develop a two court facility on the new Rolleston Recreation Precinct to replace the current single court in the Rolleston Community Centre.
6. Develop an additional 2 indoor courts in Rangiora, preferably as part of planned district hub in the north east of town.

5.4. High Performance Sport – Regional Centre of Excellence

High performance (HP) athletes and squads need a network of event venues, training facilities and support services to nurture their talent and succeed nationally and internationally. Some services and facilities are more effective when co-located in a HP hub (Centre of Excellence) such as specialist equipment and personnel used by most sports. Many sports had and will continue to have their game and training facilities located away from the main HP Centre at their own regional hub facilities. The intention is to retain use of existing operational facilities of appropriate standard in the first instance. However, a High Performance Centre of Excellence is proposed as part of the Metro Sport Facility to replace the hub lost at QEII.

5.5. Venue for Flat Water Sports

Kerr's Reach on the Avon River has been the traditional home for flat water sports in Greater Christchurch. Lake Ruataniwha has extensive event infrastructure in place and is the venue within the Canterbury region used for national events. Pre-earthquake the Avon River had become overcrowded at peak times and had on-going problems with weed growth. Post-earthquake the Avon River is usable but club-owned shore facilities are damaged and the riverbed has been elevated. The launch facilities are still operational. The Avon River is still the most viable location for flat water sport in Greater Christchurch and development is proposed once land issues are settled.

5.6. Motorsport Events Hub

The existing facility at Ruapuna raceway just outside of Christchurch is a well established motorsport hub already catering to a number of different forms of motorsport. Whilst largely unaffected by the earthquakes the major asset owner The Canterbury Car club has identified the need for an upgrade of the off-track facilities to meet the needs of modern race event promoters and competitors and to remain a viable venue for major motorsport events as well as regular operations. This upgrade is not included in this plan as it is not directly related to recovery work and is already well progressed.

In keeping with the principles outlined in this plan this motorsport hub should continue to be considered as the first choice location for future motorsport developments of any nature (eg: karts, jetsprint boats) as opportunities arise.

5.7. Sport and Recreation Major Events

Events are a key driver in provision of places and spaces for sport and recreation. Sport and recreation events deliver significant economic and social benefits to Greater Christchurch as detailed in the Issues and Options paper. Post-earthquakes closures of AMI Stadium, QEII and Cowles Stadium has dramatically reduced event capability.

Provision needs to balance peak spectator capacity for major events (that in many cases will only occasionally be hosted by the city) and the capital and operating cost of the venue as well as achieving high visual impact and energy of a "full house" for sports codes, their sponsors and TV broadcasters.

The following proposed development projects will remedy critical deficits for hosting of major events:

1. If a decision is made not to repair AMI stadium develop a **rectangular stadium** with a peak spectator capacity of around 30,000 close to the city centre.⁶
2. If a decision is made not to repair AMI stadium develop an ICC (International Cricket Council) compliant international **cricket arena** at Hagley Park for all forms of the game.⁷
3. Purchase portable grandstand seating units designed to fit at many city sporting recreational, arts, community and event venues.
4. Develop a large indoor 8 -10 court facility to host national tournament and championship events primarily for netball, basketball and volleyball but with capability to host one-off events for badminton, table tennis and gymnastics. The same facility to provide a mid-size spectator arena for a feature court between the capacity of the CBS Stadium and Cowles Stadium at approximately 3,000 seats

⁶ Ideally the design should be multi functional with spaces for offices, sports, apartments, exhibitions and conferences considered in the brief. Some of the spectator capacity should be delivered using the same portable grandstands proposed for use city-wide. The temporary Christchurch stadium at Addington will provide for the next 5 years whilst a permanent solution is delivered.

⁷ Christchurch could be one of the key host cities for the 2015 Cricket World Cup if an ICC compliant arena can be put in place. The timeframe is short with the need to have a pitch that complies with ICC standards by November 2013 to confirm Christchurch as a host venue and an arena constructed that will comply with ICC requirements. It is unlikely that a temporary venue based on an oval with a compliant pitch will meet ICC requirements. Christchurch lost its rights to host the Rugby World Cup, many stakeholders do not wish the same to happen for the Cricket world cup. Any Cricket venue should be close to the Christchurch City Centre, based on a big "Village Green" style such as the Basin Reserve in Wellington. It should have a Pavilion and low-rise embankment with a core capacity for 11,000 and space for portable grandstands to take the capacity to 16,000. The facility must have discreet lighting such as retractable lights and be capable of being used for open air community events and winter sports

5. An indoor aquatic centre with pools able to host national swimming, water polo, canoe polo and other aquatic sports events with spectator seating
6. All-weather 8 lane athletics track with sand based interior field, field event facilities and permanent spectator seating for 500 with capacity to increase to 1,500-2,000 with portable units. At a later stage a permanent pavilion and 4 lane warm up track adjacent to main track
7. Artificial rectangular pitch with permanent spectator seating for 250 with capacity to increase to 1,500-2,000 with portable units
8. Provision of sand based grass and artificial pitches over 15 years.
9. Develop two international standard water based Hockey turfs with permanent spectator seating for 500 with capacity to increase to 2,000-2,500 with portable units
10. Develop suitable courses embedded into the layout of roads and open spaces in Christchurch City for events such as the Christchurch Marathon, cycling events such as the Inner City Criterium and a suitable duathlon course (possibly triathlon in the future if suitable water quality can be achieved)

Several of the above facilities could be part of the planned Metropolitan Sports Facility.

6. Possible Development Sites for Sport and Recreation

The map below illustrates the priority locations for sport and recreation hubs and precincts in greater Christchurch. The most significant precincts in Greater Christchurch will be:

- Hagley Park / Central City (*marked "A" on maps*)
- A high performance and participation precinct spanning the University of Canterbury, Jellie Park and Burnside Park (*marked "B" on maps*)
- A sporting and event precinct spanning several sites: AMI Stadium, Hagley Park, Rugby League Park and Addington Raceway through to Canterbury Agricultural Park and Nga Puna Wai in the south-west. (*marked "C" on maps*)

These sites along with the proposed central city hub centred on the Metro Sports Facility will replace capacity lost at QEII.

The locations shown on the map, both publicly and privately held, provide the foundation needed for building a world class integrated network of places and spaces for sport and recreation.

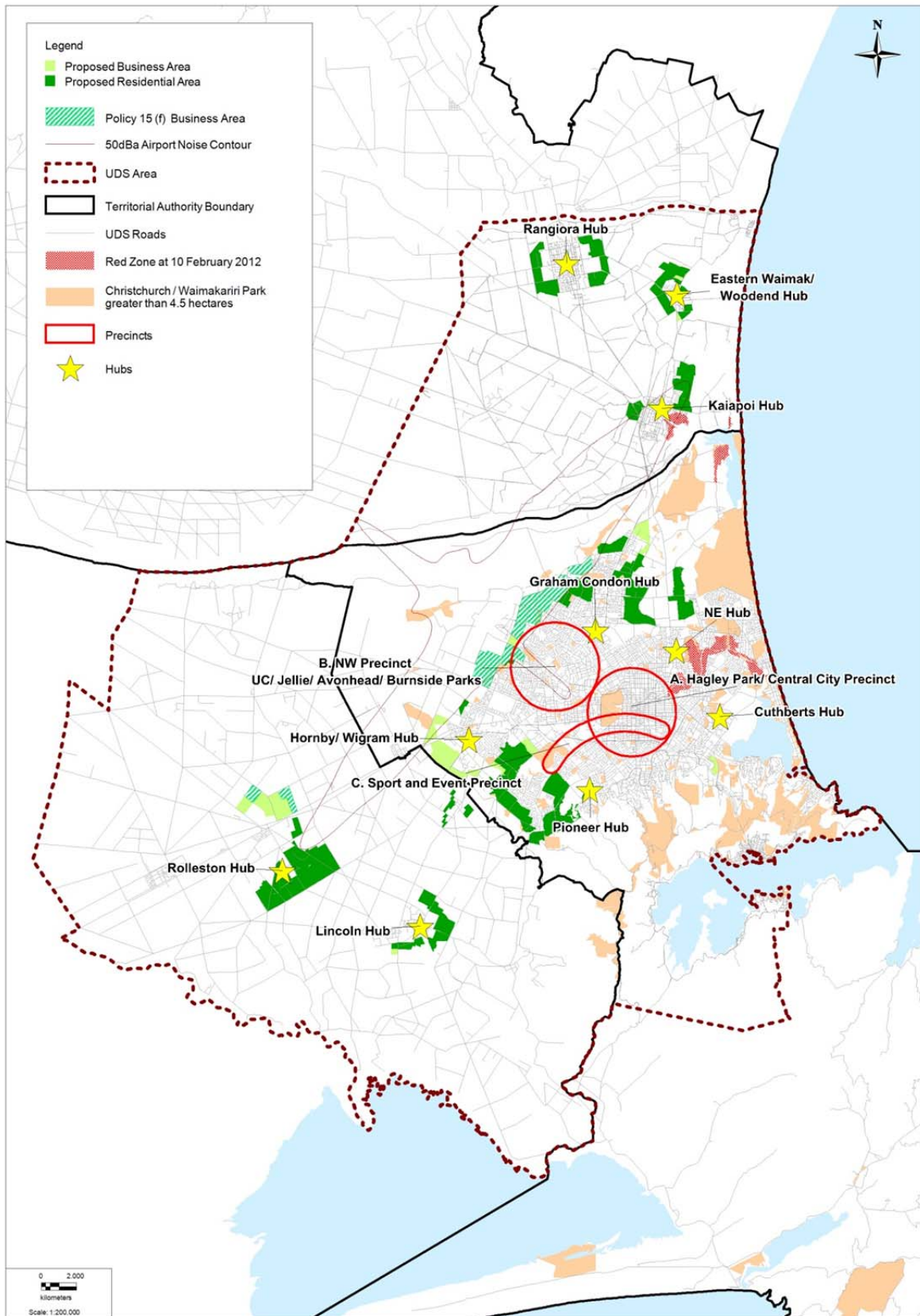
These sites are consistent with the planning principles of creating places that are integrated with the wider community, are accessible, enable innovation, are more sustainable through enabling co-location, are aligned with wider planning, involve partnering and sharing and will contribute vitality to community life in Greater Christchurch.

Several places are already operating as sport and recreation precincts or hubs to varying degrees. Further development of several of these sites as precincts or major hubs is critical in replacing lost capacity and improving the delivery of sport and recreation in Greater Christchurch. The draft Outdoor Sports Land Plan indicates that major hub parks need to be approximately 30 hectares in size – primarily to cater for demand for outdoor sports fields. Several of the identified sites are smaller than 30 ha but have attributes that make them significant as regional or district-wide places for sport and recreation.

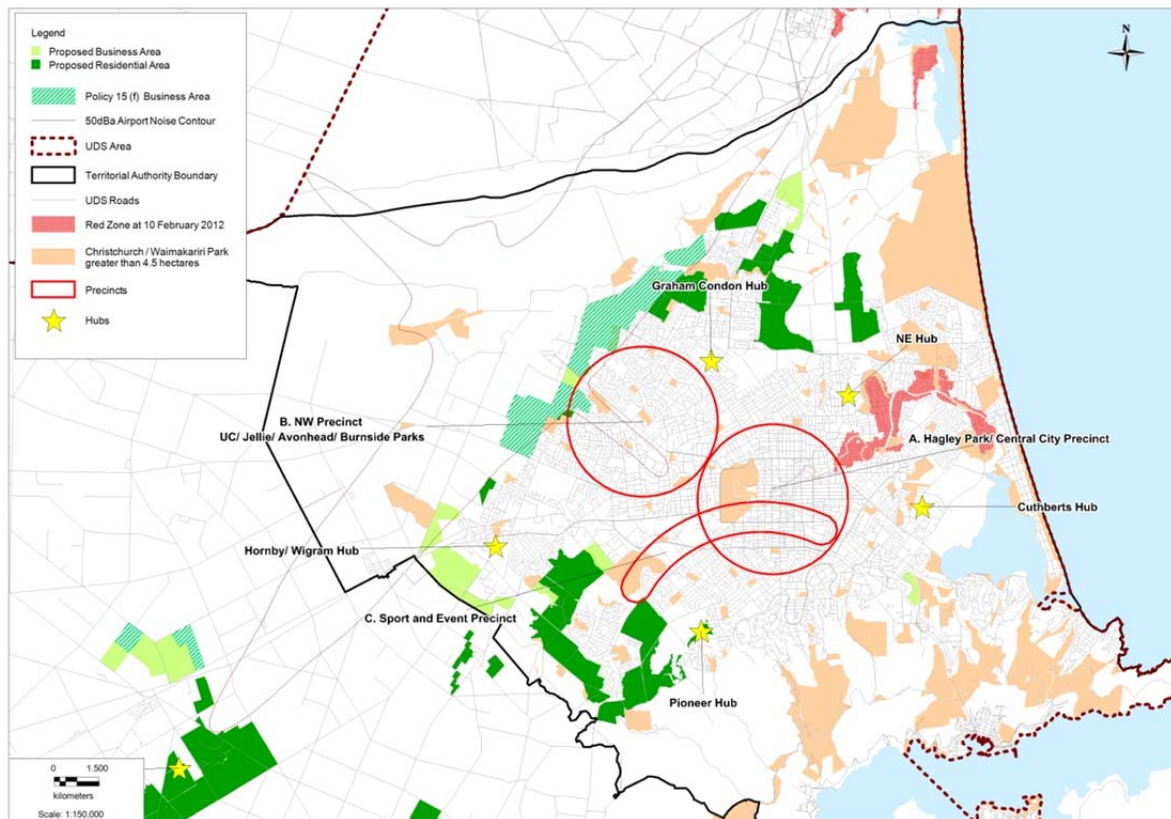
The major sites across Greater Christchurch for retaining or to consider developing as precincts or major hubs at a regional or district-wide level are listed in Schedule Two.

6.1. Map 1 – Proposed Precincts and Major Hubs for Sport and Recreation in Greater Christchurch

Sourced from Greater Christchurch Urban Development Strategy



6.2. Map 2 - Proposed Precincts and Major Hubs for Sport and Recreation in Christchurch City



7. Timing Schedule for Major Projects

The Places and Spaces Plan is proposing a preferred general direction or pathway for development based on best practice and evidence of need. The planning principles and criteria have been applied by the SRLG to identify priority projects to meet identified needs. The table below lists the suggested priority of projects by purpose and timing of development. Most replace capacity lost by closures caused by the earthquakes (e.g. QEII) but many also address pre-earthquake deficits in capacity (e.g. indoor courts). It is anticipated that available funding will be heavily over-subscribed which is likely to require staging of some developments. Some projects are temporary or short life developments to immediately replace loss of capacity so people can get back to participating and in some cases excelling in their chosen sport or recreation. These temporary developments replace places and spaces closed indefinitely because of the earthquakes and where long term developments are likely to have a significant lead time before they will be operational.

The criteria used to identify and prioritise projects were:

- The degree to which current and reasonably foreseeable demand/need exceeds place and space provision.
- The number of participants affected now and reliably predicted into the future.
- Importance to Cantabrians
- Degree aligned with stakeholder planning for Greater Christchurch

- Degree to which proposed development meets industry best practice

There were three pre-requisite conditions that needed to be fulfilled in order for a proposed development to be considered against the criteria, these are:

- Proposal is supported by verifiable facts to enable evidence based decision-making
- The need identified can only be met through land or facility provision
- Evident that strategic planning has been undertaken

Several projects in the table below have background descriptions in the Issues and Options paper. It should be noted that the Metropolitan Sports Facility currently includes a major aquatics centre including a 50 m competition pool, leisure/visitor attractions, an indoor stadium, a high performance training centre, artificial surfaces and centralised sport management and administration support facilities. These elements are included in the table below as they are seen as priority projects. .

Table 2: Priority Development Projects

Projects are sorted by type/function then by timing.

Immediate	1-3 Years	4-10 Years	10+ Years	Project	Description
				Temporary rectangular stadium for rugby, rugby league and football	Under construction at Rugby League Park Begin planning for the long-term future of Rugby League Park when the site is not needed for a temporary stadium
				Permanent rectangular stadium if AMI is not restored	Uncertainty regarding restoration of AMI Stadium.
				Repair Kaiapoi Aquatic Centre	Significant EQ damage requiring major repairs
				Complete Selwyn Aquatic Centre at Rolleston	Indoor aquatic centre with 25m 8 lane pool learn to swim pool, toddlers pool, therapeutic pool with spa
				Review CCC Aquatic Facilities Plan	In particular: <ul style="list-style-type: none"> ▪ The location of the large scale competitive, water-sport and leisure aquatic facilities previously located at QEII ▪ Providing for community access to indoor aquatic facilities in Christchurch City
				Aquatic Facilities in Schools	Upgrade of some strategically located school pools to provide improved local learn to swim and recreational swimming opportunities
				Aquatic sports centre to recover lost capacity in Christchurch City	Aquatic sports centre includes the large scale competitive, water-sport and leisure aquatic facilities previously located at QEII Preferably as part of a hub
				Aquatic facilities to recover lost capacity and fill geographic gap in network in Christchurch City	A significant aquatic centre located to reflect demographics of city. Function and features to complement rest of network (likely 25m pool and other features for community use) Preferably as part of a hub
				Aquatic facility in Lincoln area	Another significant aquatic centre located to reflect demographics of Lincoln and neighbouring areas. Function and features to complement rest of network, particularly Selwyn Aquatic Centre at Rolleston.

Immediate	1-3 Years	4-10 Years	10+ Years	Project	Description
					Preferably as part of a hub
				New indoor court multi-use stadium for basketball, netball and some volleyball	An 8-10 court facility including a 'mid-size' indoor arena around a feature court. Approximately 3,000 seat capacity with television capability is required to meet minimum hosting requirements for Basketball NZ & Netball NZ events. Preferably as part of a hub, with the provision for indoor sports who need specialist space to build on the same site e.g. gymsports
				Indoor courts at Cowles Stadium for basketball and some volleyball	Uncertainty regarding land. Unclear whether to extend, temporary repair or exit. If extend increase planned capacity from 3 courts to 4 courts
				Wigram Hangars conversion to sport and recreation facility initially indoor courts for basketball and netball	Two heritage classified former hangars with large clear span space. Conversion to include indoor courts with other purposes as able to be incorporated such as Gymsports. Possible conversion to other sports and recreation purposes if court demand met elsewhere. Preferably as part of a hub with other developments at this site
				Additional indoor courts in Waimakariri	A 3-4 court facility primarily for participation purpose likely located in Rangiora. Preferably as part of a hub
				Additional indoor courts in Selwyn as part of a Rolleston Recreation Centre/Sports Stadium	A new multi-sports stadium on the Rolleston Recreation Precinct site to meet growth and replace existing Community Centre
				Portable grandstand seating for use by wide range of sports including rugby, rugby league, hockey, football, cricket, athletics	Portable grandstand seating units for use at several venues to provide seating for major events. Will supplement permanent seating provision at venues.
				Stage 1 - All weather athletics track replacing track closed indefinitely at QEII	An 8-lane track plus field event facilities (replacing QEII). Preferably linked to or in close proximity to a high performance centre
				To create a Class 2 athletics venue to host international and national athletics events	Comprising a 4 lane warm-up track, permanent grandstand and pavilion and using previously built 8-lane track plus field event facilities to host some lower level international athletics events as well as the national athletics events Stage 2 of athletics hub
				Badminton extension to existing stadium at Cuthberts Green	Extension to existing facility at Cuthberts Green proposed by Canterbury Badminton Association, but finances not confirmed. Would like to be available to host a World Masters games or similar.
				Badminton facility in west of Christchurch	A facility has also been proposed in the west of Christchurch city to meet local demand for badminton with volleyball another possible user. Preferably as part of a hub
				Canterbury Trails	Network of complementary off-road walking and

Immediate	1-3 Years	4-10 Years	10+ Years	Project	Description
				network staged development	cycling pathways and trails across greater Christchurch radiating out from central Christchurch, linking with regional hub parks and Rangiora, Kaiapoi and Rolleston
				Port Hills Roads	Restore access to Sumner Road, Evans Pass and the Summit Road
				International cricket arena at Hagley Park	Pre-EQ proposed development of Test arena. If AMI Stadium is loss then new ICC standard arena required with up to 20,000 capacity (some in grandstands) and flood lights. If AMI Stadium restored then Test arena and domestic cricket with up to 8-10,000 capacity and no floodlights required.
				Wilding Park Tennis Centre (regional hub)	Repair the 6-court indoor centre and rebuild 16 outdoor courts. Balance of land (pre-EQ were a further 17 courts) could be used to create a multi-code hub. Increase use of 4-5 satellite centres (minimum of 10 courts each) in Greater Christchurch
				Satellite Tennis Centres (local hub)	4-5 satellite centres (minimum of 10 courts each) in Greater Christchurch Preferably each as part of a hub
				Cycling Velodrome	Replacement of Denton Oval velodrome for track cyclists. Preferably each as part of a hub
				Cycling BMX	Develop a competition track as a regional hub for BMX
				Flat water course for training and shore facilities	Re-develop training course at Kerrs Reach. Light construction shore shared facilities. Floodlights to increase useable hours. Explore club cooperation on shared facilities.
				Flat water course for competition events	Competition course (2,150m x 108m x 4m depth) is major excavation and event shore based facilities
				Gymsports Centre	Rebuild lost capacity of Christchurch School of Gymnastics closure Preferably dedicated space as part of a hub
				Gymsports Centre	New third centre in Christchurch Preferably dedicated space as part of a hub
				Gymsports Centre	Expand Olympia on-site or at Wigram Hangars Preferably dedicated space as part of a hub
				3rd Nunweek Park hockey turf	Plan in place for 3 rd artificial turf at Nunweek Park
				Hockey arena with 2 water turfs	Develop water turfs with temporary limited pavilion and use portable grandstand seating units and other temporary fit out to host International Tests and national tournaments.
				Permanent pavilion and seating at Hockey arena	Develop seating with pavilion to host International Tests and national tournaments.
				Artificial / sand based pitches	Implement a programme of artificial / sand based rectangular pitches
				HP Regional Centre of	Regional Centre of Excellence for high

Immediate	1-3 Years	4-10 Years	10+ Years	Project	Description
				Excellence – short term/temporary solution	performance sport at Jellie Park.
				HP Regional Centre of Excellence – Long term solution	Regional Centre of Excellence for high performance sport with HPSNZ as key tenant Preferably dedicated space as part of a hub
				Sports house administration hub	An administration hub for regional sports organisations and Sport Canterbury Preferably dedicated space as part of a hub

8. Looking Forward

The next phase of planning will be undertaken by each Council and CERA in conjunction with the sport and recreation stakeholders over the coming months. Timing of individual projects may change as external factors impact on projects such as the Long Term Plan and Annual Plan deliberations of each Council and the Recovery Strategy and Programmes of CERA evolve. For example, the Central City Plan has two implementation scenarios for the Metropolitan Sports Facility in either 2012 (faster implementation) or 2014 (slower implementation).

Feasibility studies will determine the design and mix of sport and recreation activities such as within the Metropolitan Sports Facility and the Nor'west precinct. During the feasibility studies for these projects care should be taken to:

- Get the optimum site.
- Choose the facility components that best complement the development.
- Provide for easy access and convenient parking
- Moderate the cost

9. Schedule One

9.1. Identification of future trail network development for Canterbury

1. Develop a City to Surf or Source to Sea route following along the Avon River corridor to the Estuary with opportunity for both wide paved pathway and a chip surface pathway (possibly on both banks).
 - Re-instatement of existing tracks along the Avon River.
 - Develop a branch to Sumner (including the proposed Memorial Coastal Path also potential route down Worcester St and following the Linwood Canal to the Estuary and on to Sumner).
 - Enhance branch to South New Brighton and Southshore.
 - Continue development to follow the coast to the north and linking to the City to North trail via Bottle Lake Forest Park and to the Waimakariri River southern bank corridor.
2. Re-opening Sumner Road, Evans Pass and Summit Road as well as existing tracks on Port Hills .
3. Styx Source to Sea – from the headwaters of the Styx River to the Estuary.
4. Develop Head to Head Walkway – a route around Lyttelton Harbour from Godley Head to Adderley Head. Some sections will be shared use. The track will be of varying degrees of difficulty depending on terrain.
5. Perimeter Walkway – partly bikeable. Alignment of routes through West Melton Reserves and Waimakariri River Regional Park have been planned. Planning of link between the Reserves and Prebbleton in early stages. Opportunity to accelerate and complete relatively quickly.
6. Heathcote Source to Sea – from the headwaters of the Heathcote River to the Estuary.
7. Develop Akaroa Walks– a number of potential walking routes have been identified on Banks Peninsula, mainly on unformed legal roads.
8. Development of Chaney's Plantation as a potential walking/cycling venue
9. Another opportunity is expanding the network of trails along the top of river stop banks as has been developed at Kaiapoi. Stop banks usually provide good views of the surrounding country and river, if somewhat exposed to wind. A significant network of stop bank trails have been developed in the Hawke's Bay with a loose chip surface. This will also enhance use of the Waimakariri River Regional Park which is the largest park in Greater Christchurch.
10. Develop City to North trail to follow the main trunk railway line north to Rangiora and linking to the central city via Hagley Park.
11. Develop City to the West trail following the main trunk railway line south to Rolleston linking to the central city via Hagley Park
12. Develop a mountain bike park on a lower risk area of the Port Hills with an intensive network of tracks.⁸
13. City to Port Hills - route to be identified
14. City to Lakes - opportunity to follow the established cycle trail to Lake Forsyth and branch to Lake Ellesmere but route of city section yet to be identified.
15. City to North West / McLeans Island
16. City to Harbour - route to be identified
17. A mountain bike trail from the headwaters of the Waimakariri to the sea through the Waimakariri Regional Park.
18. Extension/completion of the Rail Trail from Lincoln to Motukarara and a link from Lincoln to Rolleston.

⁸ Bike Park to be considered as part of Port Hills Master Plan and balanced with other demands on the hills

10. Schedule Two

10.1. Major Identified Sites

The major sites across Greater Christchurch for retaining and further development or to consider developing as precincts or major hubs at a regional or district-wide level

Central

- Hagley Park - is the largest and premier sport and recreation park in Greater Christchurch and venue for events requiring low-scale and/ or temporary infrastructure. Development of infrastructure is severely constrained by the Hagley Park Management Plan. The major changes wrought by the earthquakes make it timely to review the Management Plan to look at ways to enhance the value of Hagley Park for sport and recreation.
- Christchurch Bus Depot identified as the Metropolitan Sports Facility site in the Central City Plan and linked with CPIT campus and its facilities.

East and South East

- Avon River Corridor including Kerrs Reach for flat water sports training course and associated shore facilities.
- Wilding Park as regional hub for tennis and possibly other sports.
- Cuthberts Green sports fields expansion and develop a hub if land is viable for further building.

North and North East

- QEII; the largest hub of sports facilities pre-earthquake but closed indefinitely and subject to assessment of land viability for development.
- Bottle Lake Forest Park as regional hub for recreational cycling/walking
- Chaney's Plantation for cycling/walking
- Ouruhia Reserve with extension to about 30 ha to serve northern Christchurch City
- Waimakariri River Regional Park and links to Bottle Lake, Kaiapoi and Perimeter Walkway. McLeans Island has expansive areas of land available to accommodate sports and recreation activities. Potential for sport field development to supplement urban fields / wet weather alternative
- North East Rangiora (Rangiora High School, Rangiora A&P Showgrounds, Mainpower Oval and Maria Andrews Park).

West and South West

- Addington Raceway and Rugby League Park as the major sport and recreation event precinct in Greater Christchurch, particularly if other facilities and sites are not able to be restored
- University of Canterbury linked with Jellie Park (the temporary site of the High Performance Sport NZ regional hub) and possibly link also with Burnside Park and/or Avonhead Park to create a major precinct in the west of Christchurch city.
- Canterbury Agricultural Park and Nga Puna Wai further developed for sporting and event purposes.
- Riccarton Racecourse as horse and dog racing hub
- Ruapuna Park as regional hub for motor sports (particularly if motor sports are prepared to share a hub facility).
- Lincoln University as significant sports hub with NZ Cricket and other high performance sport infrastructure
- Rolleston Recreation Precinct as district hub (in conjunction with planned secondary school)
- Future development of 100 hectares Council owned land at Templeton for sport and recreation as required

In addition to the list above, other opportunities involving commercial land have been promoted to the SRLG and are suggested for consideration as part of downstream feasibility planning for specific regional hub projects. The Project Group and SRLG have not undertaken any investigation of these sites to date:

- Part of the Islington Freezing Works site because it is relatively well located and large enough to create a major hub park
- Addington Saleyards because it is adjacent to South Hagley Park and is large enough to accommodate a major sport and recreation development that complements Hagley Park
- Foodstuffs Distribution Centre in Papanui as an opportunity to develop a large scale indoor court facility primarily for community sport along similar lines to the highly successful Edgar Centre in Dunedin
- Turners and Growers site in central city

It is likely that development of some additional sites as local hubs will occur through local initiatives.